

The Heart Of Worship

Outline:
V1, PCh, Ch, V2, PCh, Ch

Words and Music by
Matt Redman

♩=70

VERSE

C²

G²

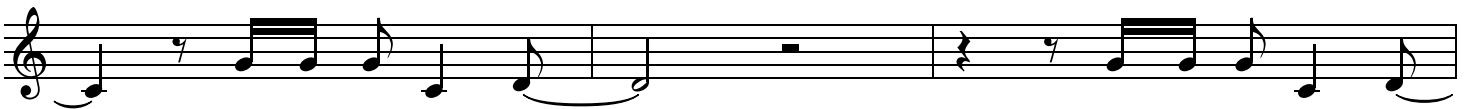


1. When the mu - sic fades, ___ all is stripped a - way, _
2. King of end - less worth, ___ no one could ex - press .

3 Dm⁷

G^{7sus}

C²



___ and I sim - ply come; ___ Long - ing just to bring .
___ how much You de - serve. ___ Though I'm weak and poor, .

6 G²

Dm⁷

G^{7sus}



___ some-thing that's of worth ___ that will bless Your heart. ___
___ all I have is Yours, ___ ev - 'ry sin - gle breath. ___

PRE-CHORUS

9 Dm⁷

C/E

G^{7sus}

Dm⁷

C/E



I'll bring You more than a song, ___ for a song in it - self is not what You have re - quired. .

12 G^{7sus}

Dm⁷

C/E

G^{7sus}



___ You search much deep - er with - in ___ through the way things ap - pear;

CHORUS

15 Dm⁷ C/E G^{7sus} C²

You're look - ing in - to my heart. _____ I'm com - ing back to the heart .

18 G^{2/B} Dm⁷ C/E F G^{7sus}

_____ of wor - ship, and it's all a - bout You, _ all a - bout You, _ Je - sus.

21 C² G^{2/B}

I'm sor - ry, Lord, for the thing _____ I've made _ it, when it's

23 Dm⁷ C/E F G^{7sus} C

all a - bout You, _ all a - bout You, _ Je - sus. _____